

Trea'ris trapje en Riel

Trearis' Trapje en jamaar!!

C

G

C

F

G

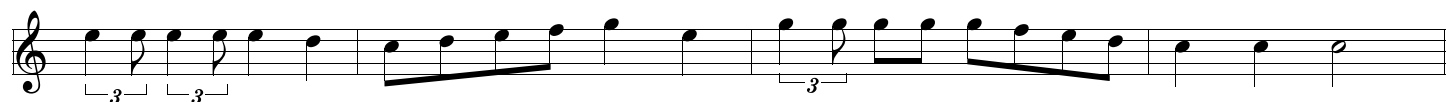


C

C

G

C



G

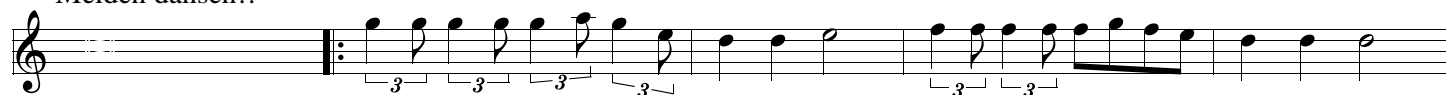
G

C

F

G

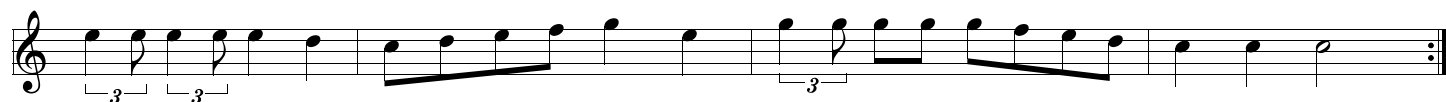
Meiden dansen!!



C

G

C



C

F

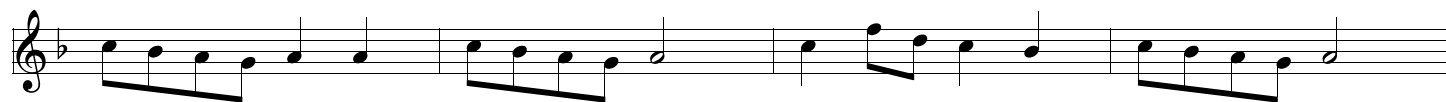
C

F

C

C

F



C

F

C

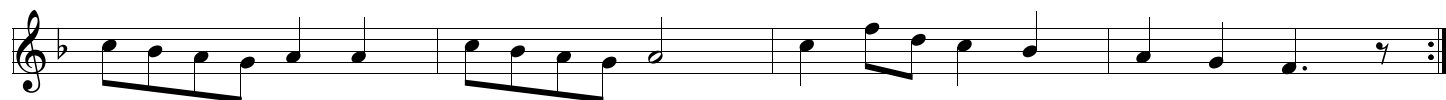
F

C

F

C

F



Riel!!

C G G C

The first staff of music for 'Riel!!' is in treble clef with a key signature of one flat. It begins with a repeat sign. The melody consists of eighth notes: G4, A4, Bb4, C5, Bb4, A4, G4, F4, E4, D4, C4. The notes are grouped into pairs of beamed eighth notes. Above the staff, the chords C, G, G, and C are indicated.

C G C G C

The second staff of music for 'Riel!!' continues the melody. It features a first ending (marked '1.') and a second ending (marked '2.'). The first ending leads back to the beginning of the piece. The second ending concludes the piece. There are triplet markings (marked '3') over the final notes of both endings. Above the staff, the chords C, G, C, G, and C are indicated.

G C G C G C G C

The third staff of music for 'Riel!!' is a bass line in bass clef. It consists of eighth notes: G3, A3, Bb3, C4, Bb3, A3, G3, F3, E3, D3, C3. Above the staff, the chords G, C, G, C, G, C, G, and C are indicated.

Runte!!

G7 C F C G C G C G

The first staff of music for 'Runte!!' is in treble clef with a key signature of one flat. It begins with a repeat sign. The melody consists of eighth notes: G4, A4, Bb4, C5, Bb4, A4, G4, F4, E4, D4, C4. Above the staff, the chords G7, C, F, C, G, C, G, and C are indicated.

C G F C G C

The second staff of music for 'Runte!!' continues the melody. It concludes with a triplet of notes. Above the staff, the chords C, G, F, C, G, and C are indicated.