

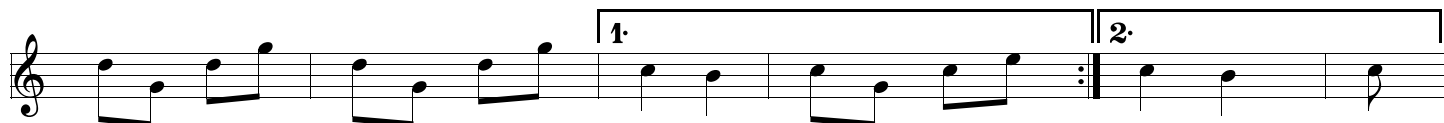

# Tiedeliepats

Trad.

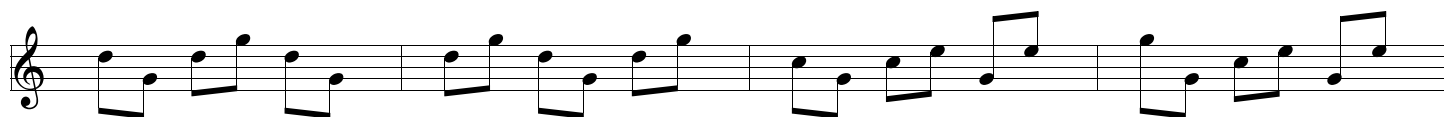

**A**



**B**



**C**



**D**

Two staves of musical notation for chord D. The first staff begins with a treble clef, a key signature of one sharp (F#), and a common time signature (C). The music consists of two measures of chords, followed by two measures of a melodic line with triplets. The second staff continues the melodic line with triplets and ends with a double bar line and repeat dots.

**E**

Two staves of musical notation for chord E. The first staff begins with a treble clef, a key signature of one sharp (F#), and a common time signature (C). The music consists of two measures of chords, followed by two measures of a melodic line with triplets. The second staff continues the melodic line with triplets and ends with a double bar line and repeat dots.

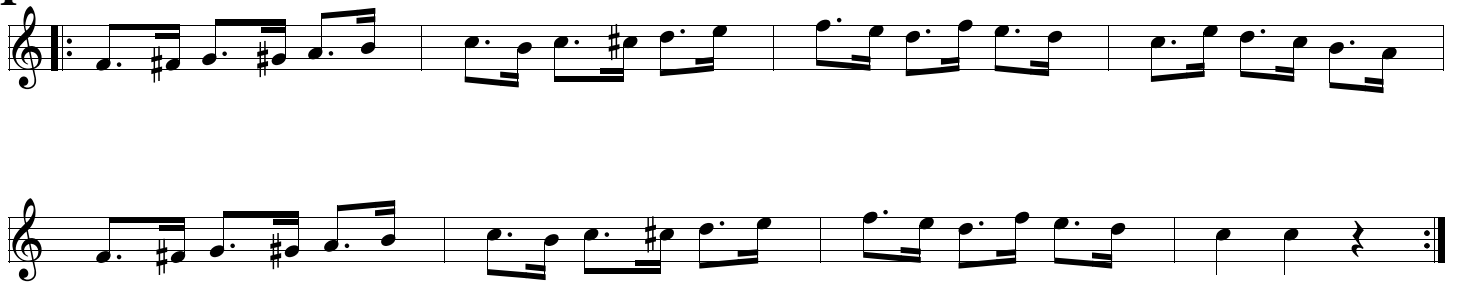
**F**

Two staves of musical notation for chord F. The first staff begins with a treble clef, a key signature of one sharp (F#), and a common time signature (C). The music consists of two measures of chords, followed by two measures of a melodic line with triplets and accidentals. The second staff continues the melodic line with triplets and accidentals, ending with a double bar line and repeat dots.

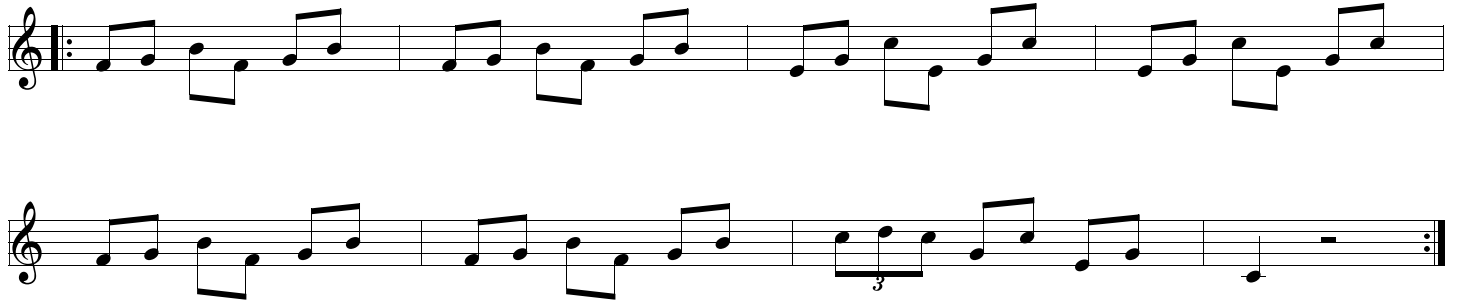
**G**

Two staves of musical notation for chord G. The first staff begins with a treble clef, a key signature of one sharp (F#), and a common time signature (C). The music consists of two measures of chords, followed by two measures of a melodic line with triplets. The second staff continues the melodic line with triplets and ends with a double bar line and repeat dots.

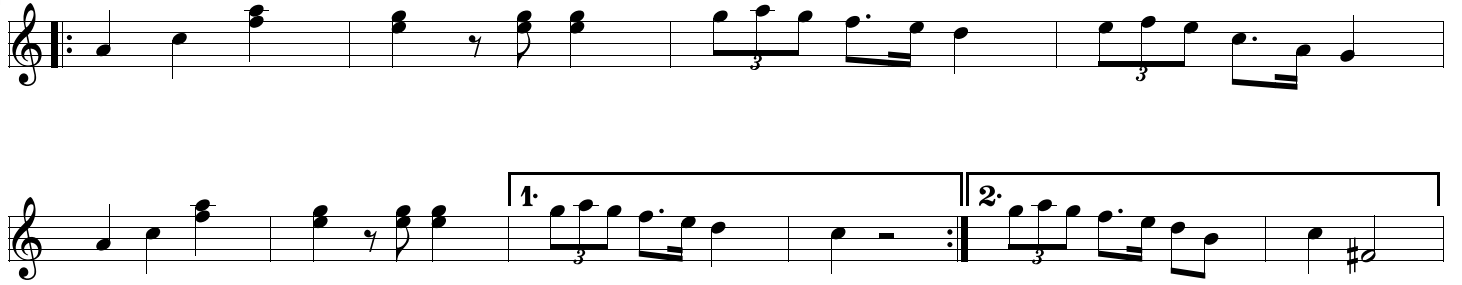
**H**



**I**



**J**



**K**

